

# OFFICIAL ZONING MAP

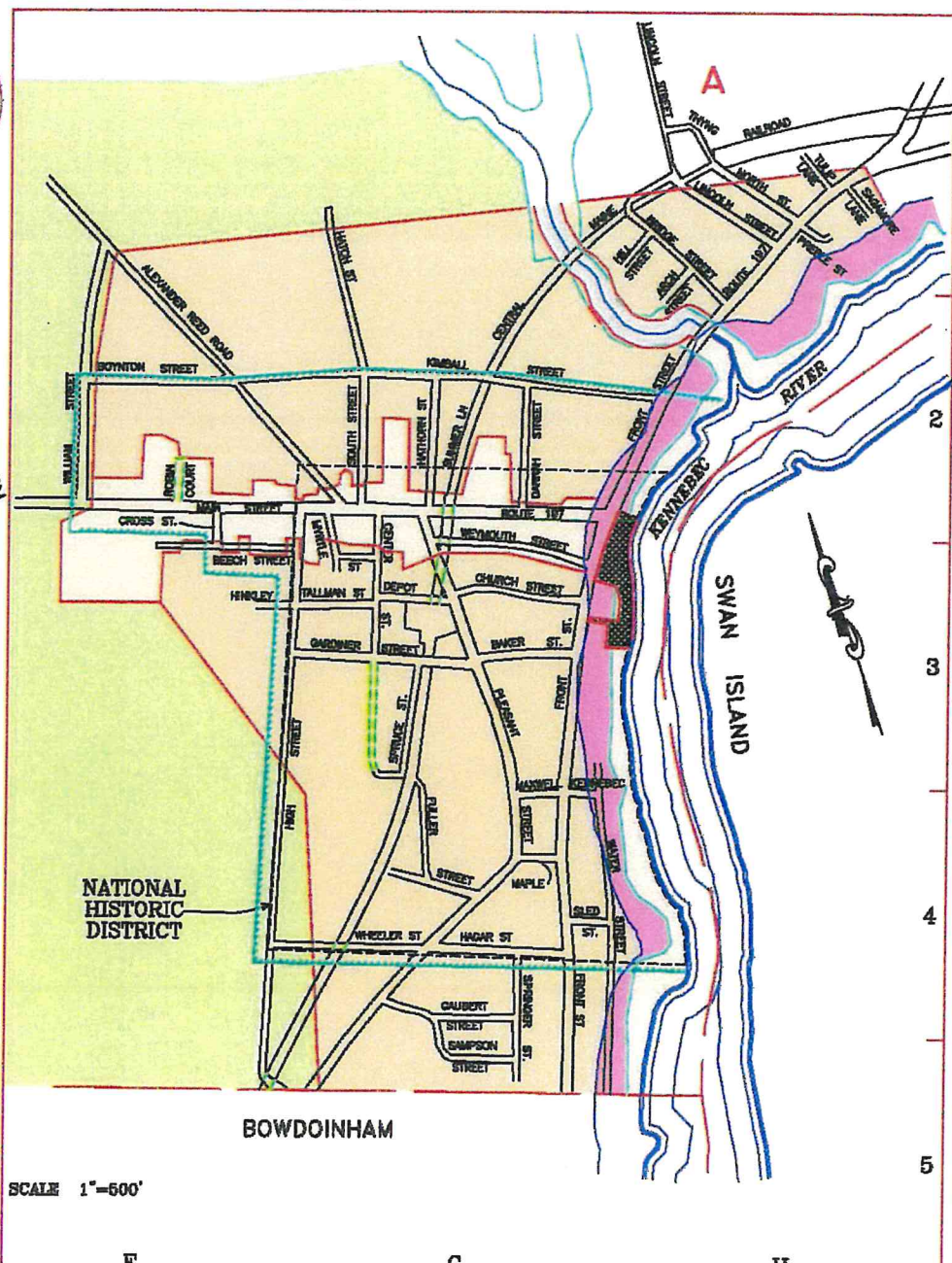
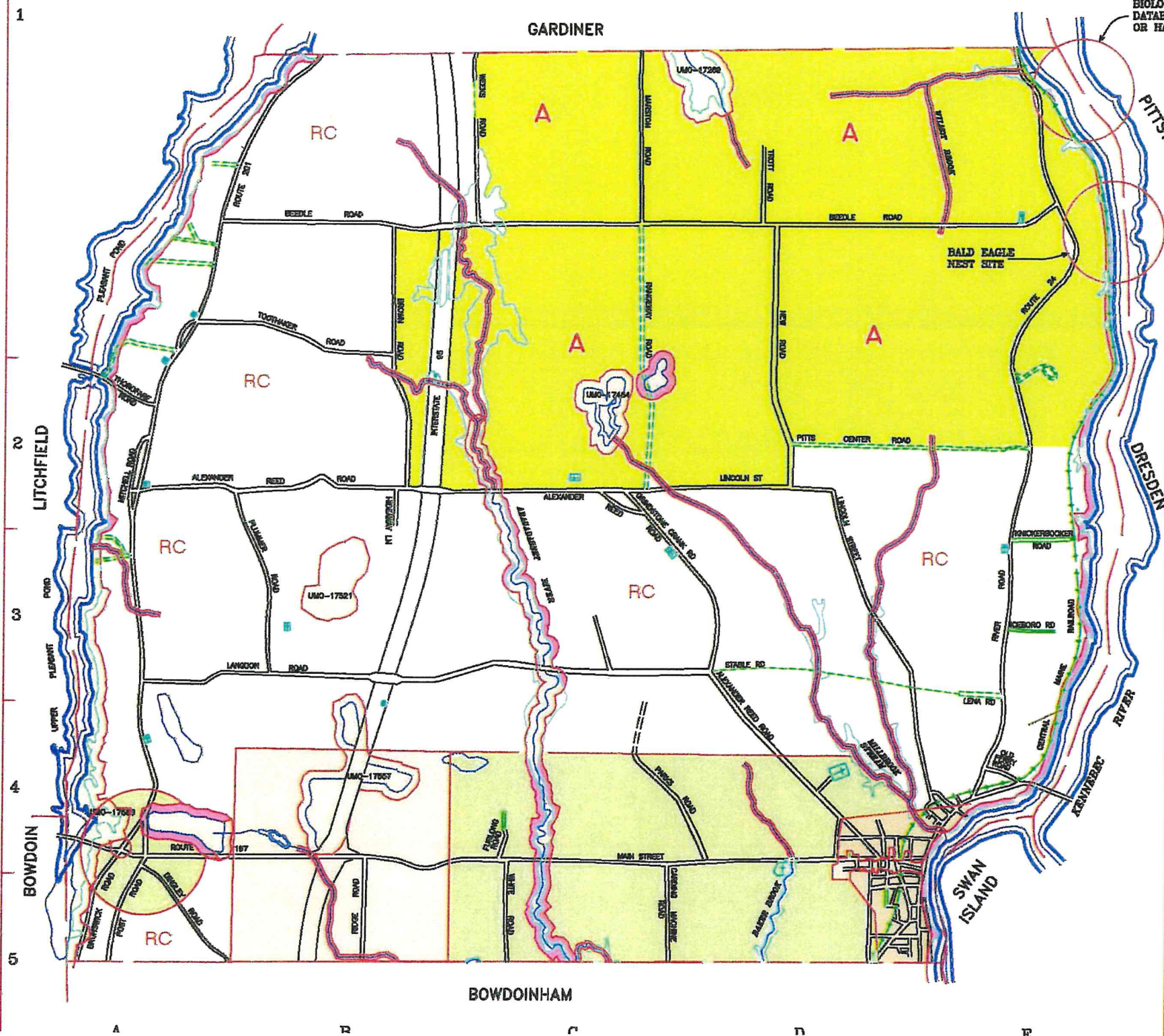
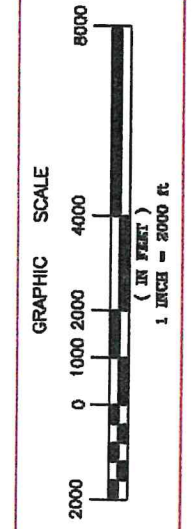
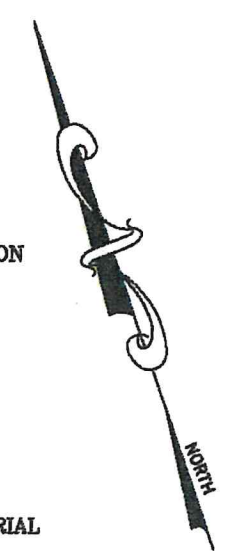
**NOTES:**

- 1) ALL ZONES THAT ARE BASED ON SLOPE, WETLANDS & FLOOD LIMITS SHOULD BE FIELD VERIFIED PRIOR TO PURCHASE OR CONSTRUCTION.
- 2) ZONING INFORMATION SHOWN ON THIS MAP IS BASED ON INFORMATION PROVIDED BY OTHERS AND IS NOT THE PRODUCT OF MORIN LAND SURVEYING.
- 3) ADDITIONAL STREAMS NOT SHOWN HEREON MAY FALL WITHIN THE SHORE LAND ZONE. SEE STREAM DEFINITIONS, ARTICLE 3 & (REFERENCE 30 M.R.S.A. § 480-B,9)

ADOPTED JUNE 20, 1974  
 AMENDED MAY 27, 1978  
 SECOND AMENDMENT DEC. 21, 1979  
 THIRD AMENDMENT JUNE 19, 1985  
 FOURTH AMENDMENT JUNE 18, 1990  
 FIFTH AMENDMENT JUNE 8, 2006

NOTE - OLDER MOBILE HOMES, TRAILERS, OR MANUFACTURED HOUSING EXCLUSION ZONE LIMIT IS SHOWN -

- Residential Commercial
- LIMITED RESIDENTIAL
- RESOURCE PROTECTION
- STREAM PROTECTION
- AGRICULTURE
- VILLAGE
- RESIDENTIAL
- COMMERCIAL- INDUSTRIAL
- FLOOD LIMIT AS PER HUD
- COMMERCIAL FISHERIES \ MARINE ACTIVITIES



PROPERTY MAP  
**RICHMOND**  
 MAINE



PREPARED BY

INDEX